

**Kingtronics**®**1N4148WS**Silicon Epitaxial Planar  
Switching Diode**FEATURES**

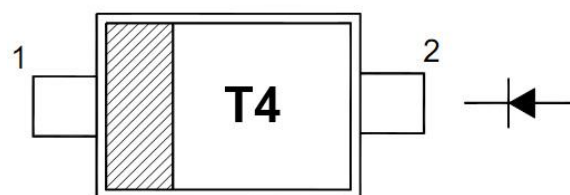
SOD-323 package

Fast switching

These diodes are also available in other case style including the DO-35 case with the type designation 1N4148, the Mini MELF case with the type designation LL4148 and the Micro MELF case with the type designation MCL4148.

**PINNING**

PIN	DESCRIPTION
1	Cathode
2	Anode



Top View

Marking Code: " T4 "

**Absolute Maximum Ratings (Ta = 25°C)**

PARAMETER	SYMBOL	VALUE	UNIT
Peak Reverse Voltage	$V_{RM}$	100	V
Reverse Voltage	$V_R$	75	V
Average Rectified Forward Current	$I_F (AV)$	150	mA
Surge Forward Current (t < 1 s, Tj = 25 °C)	$I_{FSM}$	350	mA
Power Dissipation	$P_{tot}$	200	mW
Thermal Resistance from Junction to Ambient Air	$R_{\theta JA}$	625	°C/W
Junction Temperature	$T_j$	150	°C
Storage Temperature Range	$T_{stg}$	- 65 to + 150	°C

**Electrical Characteristics (Ta = 25°C)**

PARAMETER	SYMBOL	VALUE	UNIT
Forward Voltage at $I_F = 10$ mA	$V_F$	1	V
Reverse Current			
at $V_R = 20$ V	$I_R$	25	nA
at $V_R = 75$ V		5	μA
at $V_R = 20$ V, $T_j = 150$ °C		50	μA
Total Capacitance at $V_R = 0$ V, $f = 1$ MHz	$C_{tot}$	4	pF
Reverse Recovery Time at $I_F = 10$ mA to $I_R = 1$ mA, $V_R = 6$ V, $R_L = 100$ Ω	$t_{rr}$	4	ns

**Kingtronics**® International CompanyWebsite: [www.kingtronics.com](http://www.kingtronics.com)Email: [info@kingtronics.com](mailto:info@kingtronics.com)

Tel: (852) 8106 7033

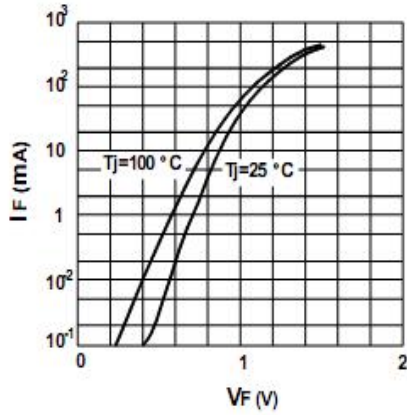
Fax: (852) 8106 7099

# Kingtronics®

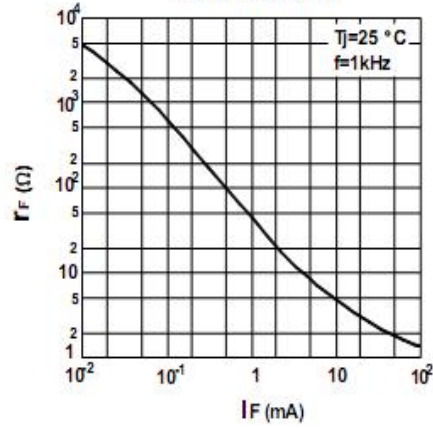
## 1N4148WS

Silicon Epitaxial Planar  
Switching Diode

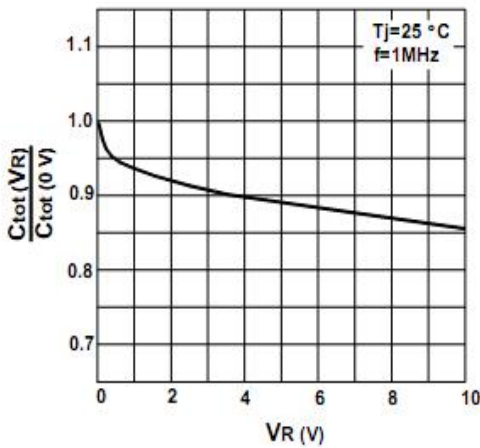
Forward characteristics



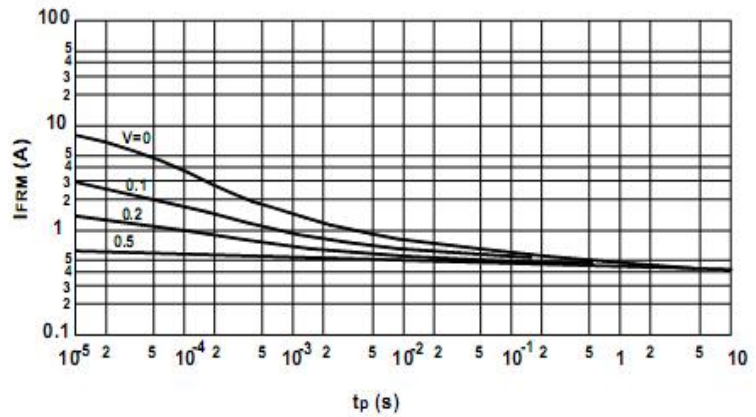
Dynamic forward resistance vs. forward current



Reverse capacitance vs. reverse voltage



Ammissible repetitive peak forward current vs. pulse duration



**Kingtronics® International Company**

# Kingtronics®

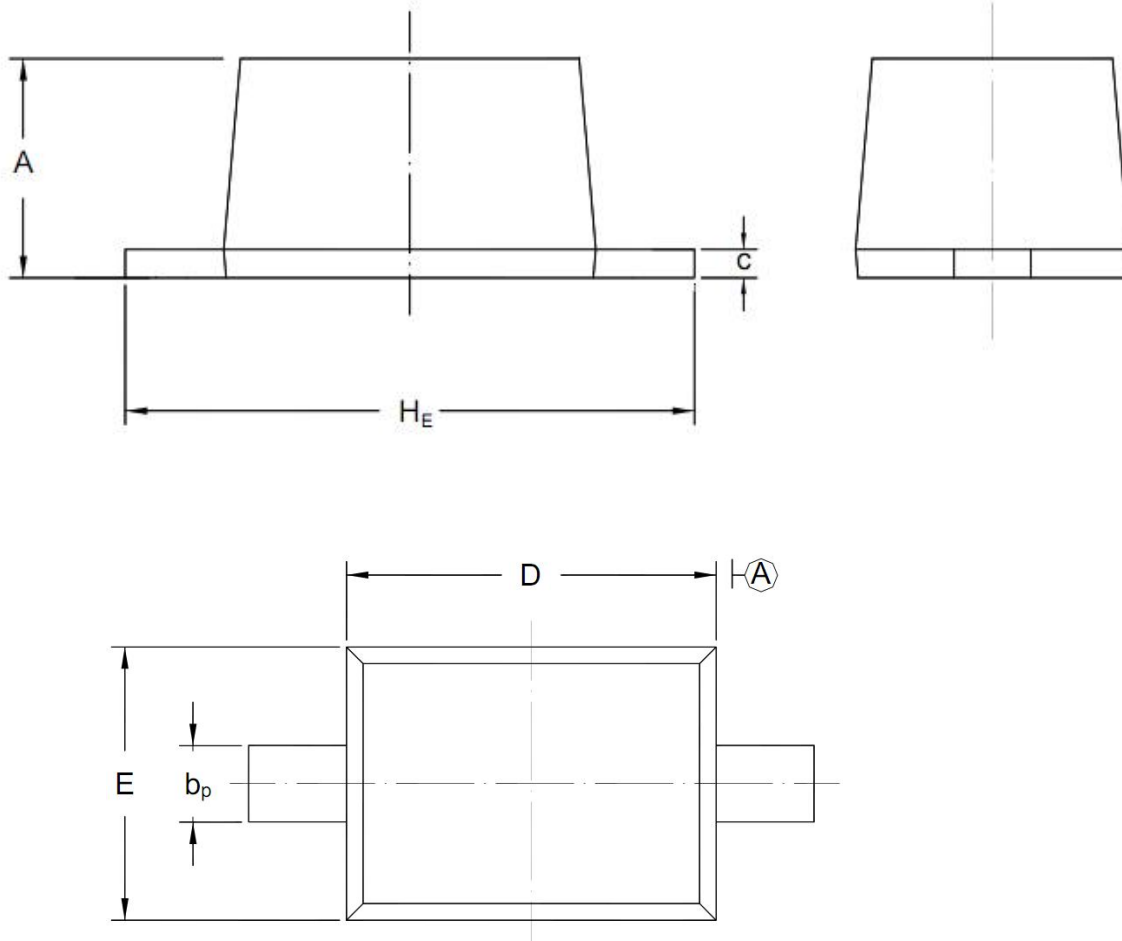
## 1N4148WS

Silicon Epitaxial Planar  
Switching Diode

### PACKAGE OUTLINE

Plastic surface mounted package; 2 leads

SOD-323



UNIT	A	b <sub>p</sub>	C	D	E	H <sub>E</sub>
mm	1.10 0.80	0.40 0.25	0.15 0.10	1.80 1.60	1.35 1.15	2.80 2.30

Note: Specifications are subject to change without notice.

**Kingtronics® International Company**

Website: [www.kingtronics.com](http://www.kingtronics.com) Email: [info@kingtronics.com](mailto:info@kingtronics.com) Tel: (852) 8106 7033 Fax: (852) 8106 7099